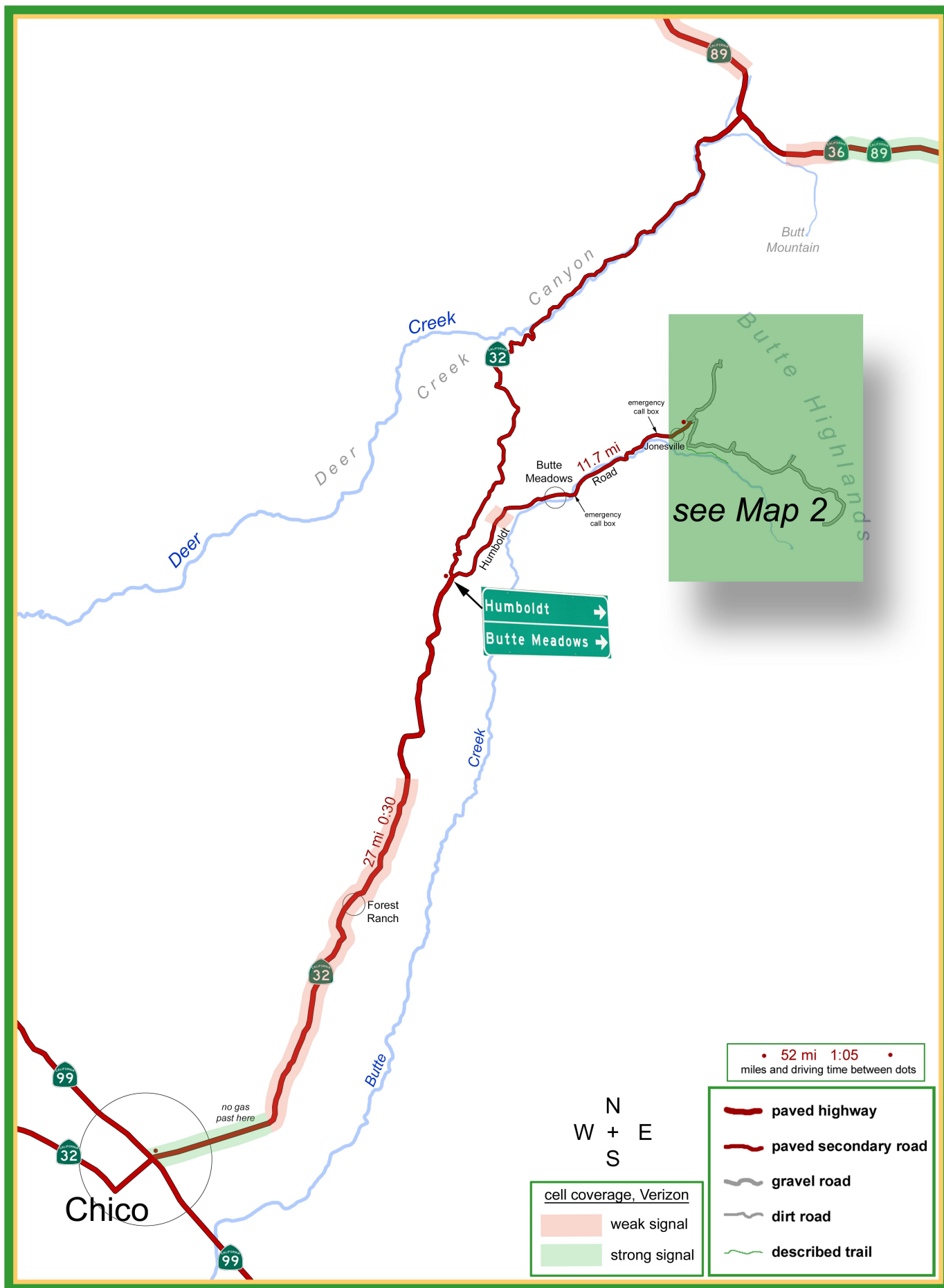
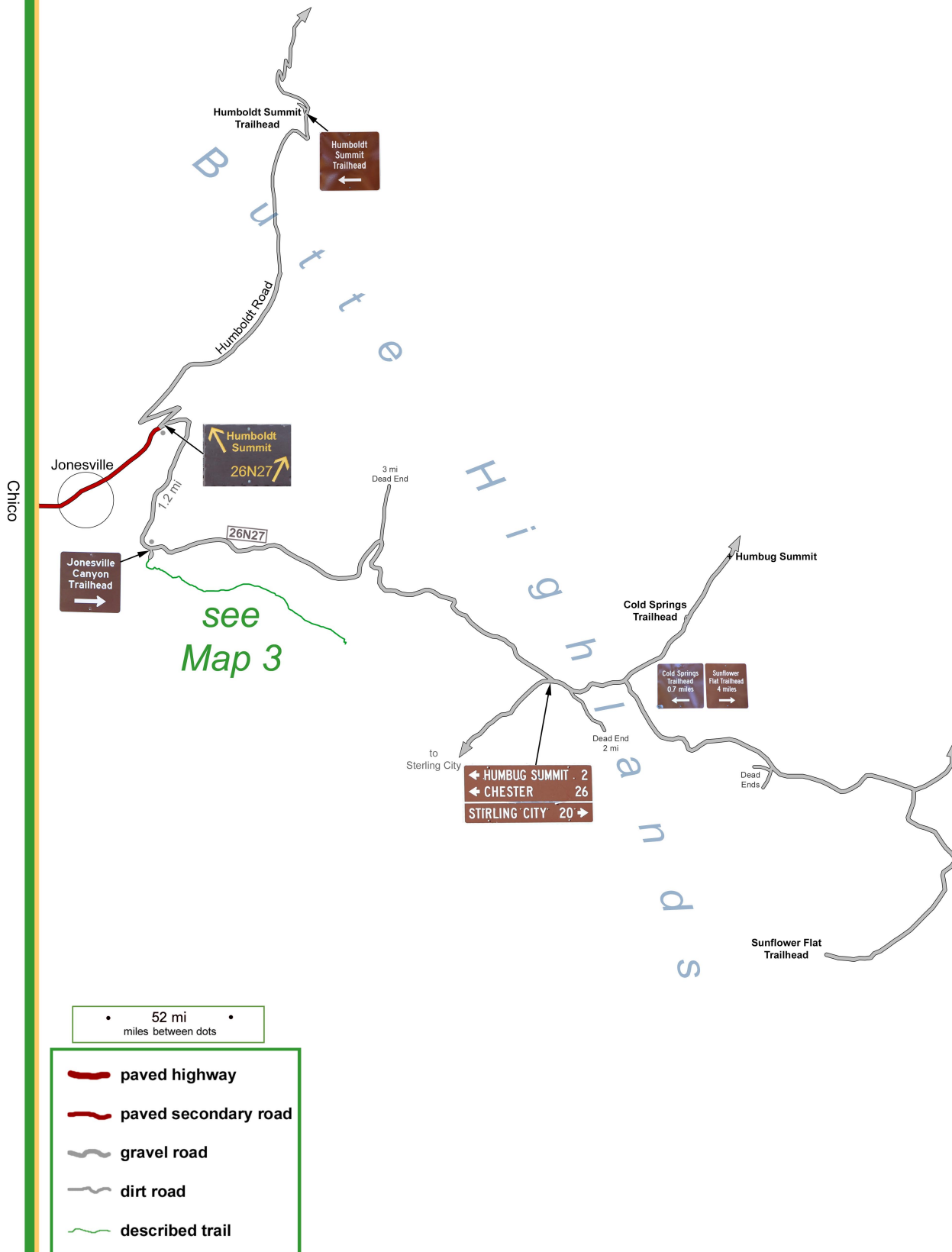


Drive: 0:55 Hike: SHORT Season: mid May-Oct (snow Nov-mid May)

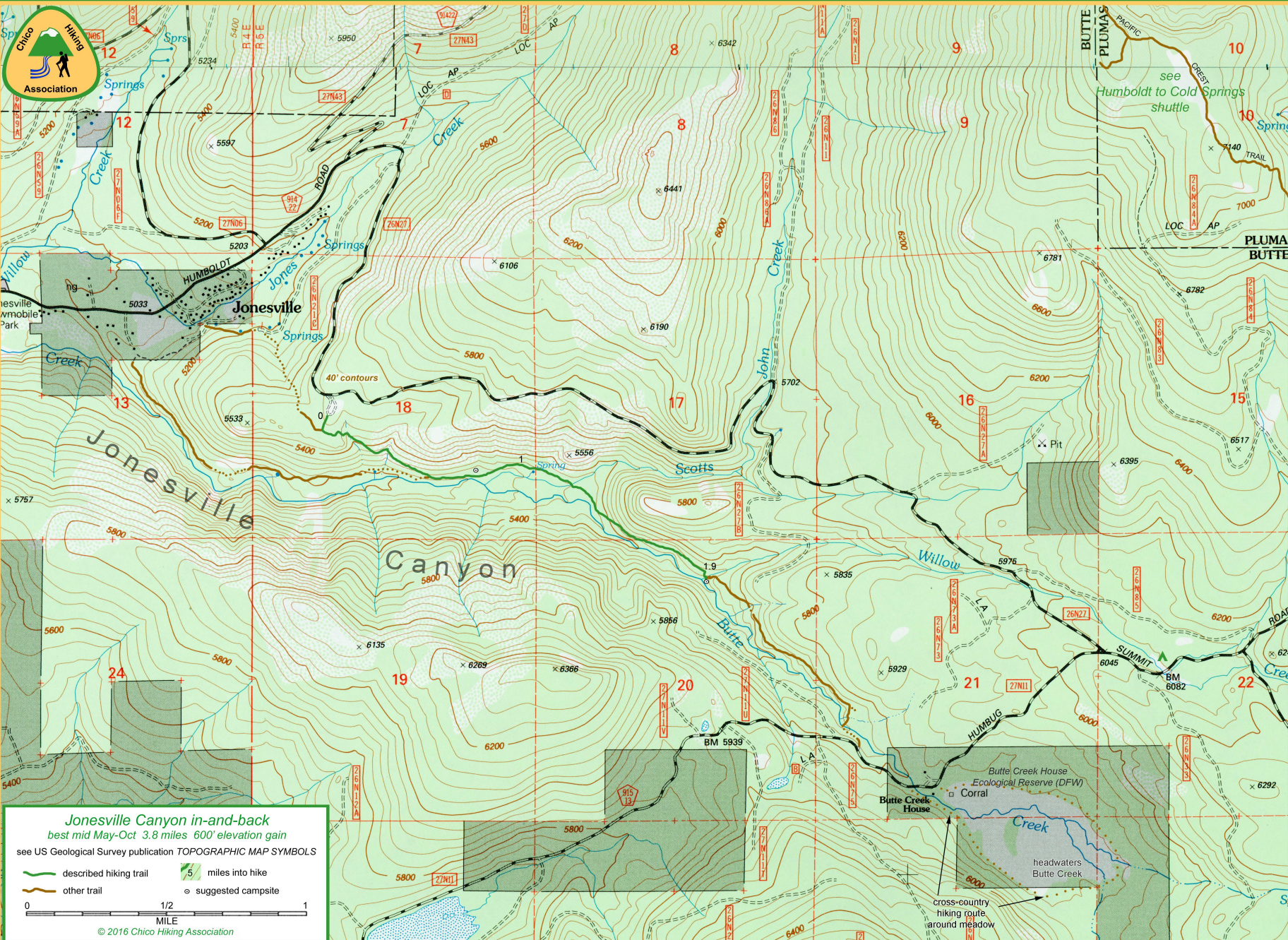


Jonesville Canyon in-and-back ▪ Map 1 of 3



Jonesville Canyon in-and-back ▪ Map 2 of 3







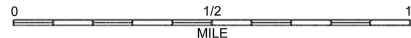


### Jonesville Canyon in-and-back

best mid May-Oct 3.8 miles 600' elevation gain

see US Geological Survey publication *TOPOGRAPHIC MAP SYMBOLS*

-  described hiking trail       5 miles into hike  
 other trail       suggested campsite



© 2016 Chico Hiking Association